

Fab9 in Yokohama  
"Fab Space"  
Project.



# HOJO-BAR

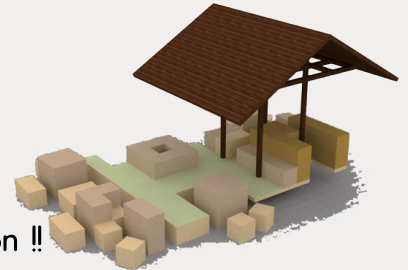
Dinner and Bar for Fabbers

## System

Digital Fabricated  
Hojo-an



Expansion !!



## Summary

This project is created by gaining inspirations from Hojo-an, a ten foot square hut often described as an archetype of Japanese temporal housing based on an idea "Mujo (impermanence)". Hojo-an is a movable hut where Kamono Chomei (1155-1216), author of celebrated essay Hōjōki ("An Account of a Ten-Foot-Square Hut"), lived.

In this project, we tried to create a temporal bar by interpreting Hojo-an based on FAB spirit. Hojo-bar consists of two element: basic structural frame and various types of boxes. Hojo-bar is a flexible system, adaptable to various kinds of activity. People will gather around Hojo-bar for a one momentary pleasure .

## Plan

